

Geared limit switch

LMVS-10/xx-x

LMVS-13/xx-x

LMVS-16/xx-x

Installation and operating instructions

Principle: Before any work shall be carried out it has to be checked that the whole line is circuit-free and any specific and general security instruction has been fulfilled.

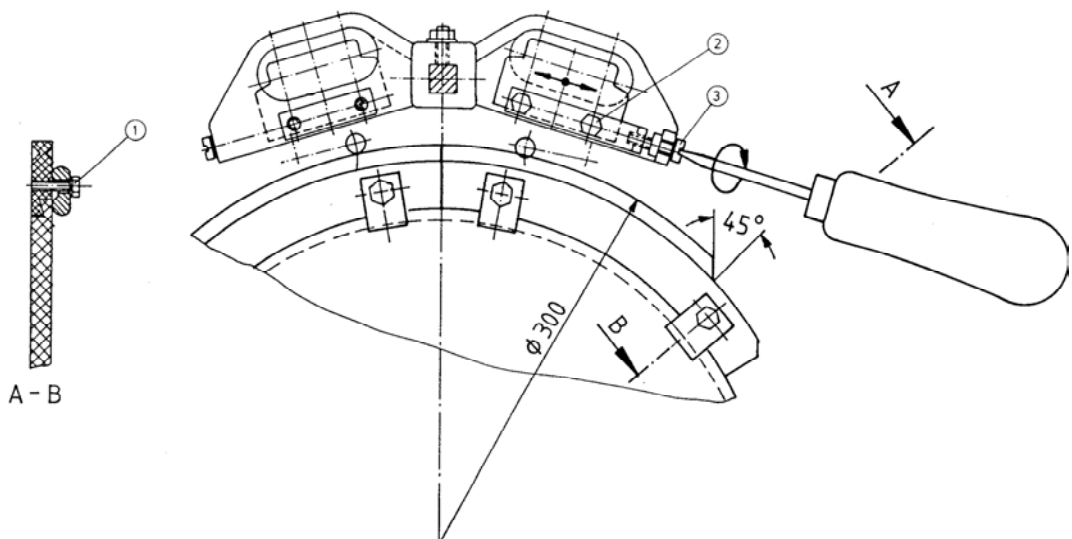
Geared limit switches of this type are provided to be installed in areas where highest switching exactness is required. The switch being available through a free shaft end can be generated by means of coupling, tooth or chain drive. The gear ratio of the built-in intermediate gearing should be selected in that way, that the number of rotations of the switch-coupling shaft is geared on approximately 300°.

Mounting: Fixing of the switches as per construction I is to be effected with two suitable screws M12 and construction II and III with four suitable screws M12 at the wholes of the foot on a plane and stable console. The mounting position is optional. Take care that sufficient space for remoting the lid is given.

For coupling the shaft end of Ø18mm is equipped with a featherkey 6x6x14 mm acc. to DIN6885 and a snapping DIN471 for axial fixing.

To allow electrical installation open lid by turning the four cover screws. Depending on how the switch is being equipped there are 2 to 24 switching contacts in the installation space. The corresponding function of each switching contact is being printed on it. The cable inlets are equipped with threads Pg21. Wire the contacts according to the requirements demanded by the line at-site.

to be continued ...

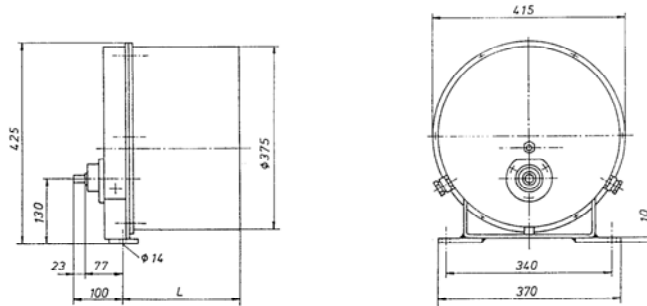


Adjustment: For adjusting it is essential that the number of rotations for switching (switching point of your plant) is reached. The coarse adjustment is carried out at the cam segments. They can be displaced on the basic disc after turning 1/2 rotation the terminal screws (1). Afterwards tighten the screws (1). For fine adjustment turn approximately 1/4 rotation the terminal screws (2) and now carry out the adjustment using the adjusting screw (3). There are $\pm 2\text{mm}$ for the fine adjustment. If this way is not sufficient, correct the coarse adjustment and then repeat the fine adjustment. Afterwards tighten the terminal screws (2).

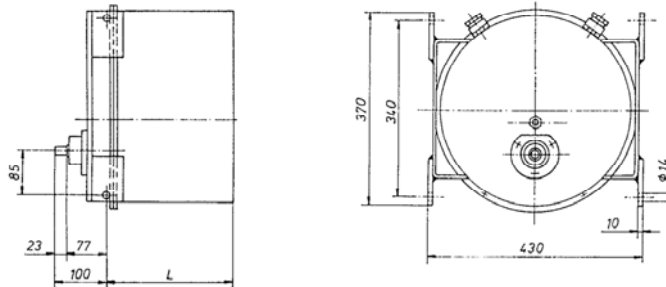
Check: Please check any electrical and mechanical function after completion of installation. If a potentiometer and a transmitter for angle of rotation or for absolute value is additionally built-in, consider the operating instructions of the corresponding manufacturer.

Maintenance: There is no need of any maintenance works for Dittelbach & Kerzler rotation limit switches due to proven construction and high material quality.

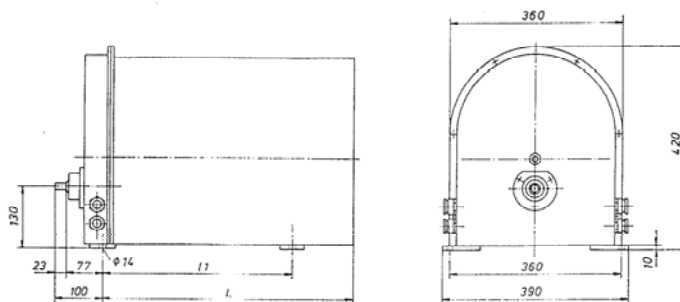
Construction I for max. 16 contacts. Horizontal position of installation



Construction II for max. 16 contacts. Optional position of installation



Construction III for max. 24 contacts. Horizontal position of installation



Coupling shaft end
number of poles up to

Weight kg	32	40	45	55	65
L	185	335	435	530	625
L ₁	./.	./.	./.	400	500

