



- **Monitors height of bulk on your conveyor**
- **Ball beared shaft**
- **Tough design**
- **Micro switch or**
- **Proximity switch**

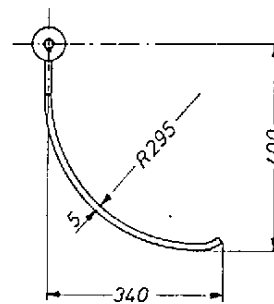
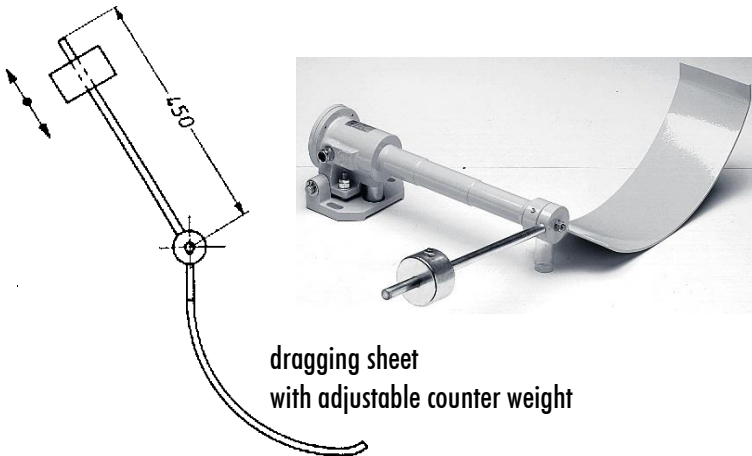
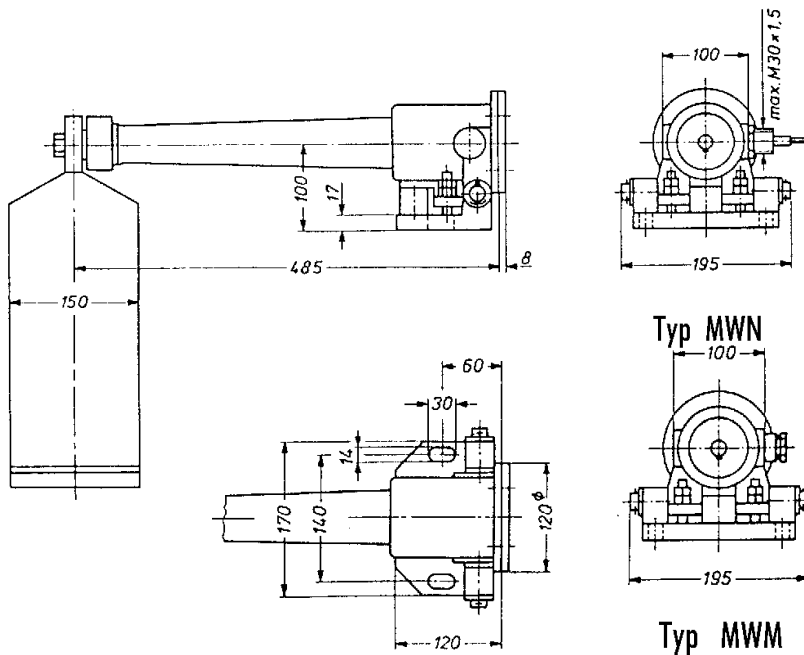


Material flow controls are provided to be installed for the automatic control of the height of charge on the conveying belt as well as the interruption of the material flow.

Material flow controls type MW are equipped with a dragging sheet led over the belt by a joint pipe measuring around 50 cm long. This dragging sheet lies on the conveying belt or on the bulk material due its dead weight. If the belt will be charged with bulk, the dragging sheet will be displaced upwards. When the height matches the adjusted height, the contacts will switch over. When the height of bulk decreases, the dragging sheet will drop down and the contacts will switch back.

For a reliable, maintenance-free operation, the shaft is ball-bearred. The solid metal housing, IP65-protected, enables a wide operating field. The dragging sheet is fastened with only one nut and, consequently, easy to be exchanged. It is mountable for both conveyor motion directions. If the dragging sheet should be too heavy for the conveyed bulk material, a version with an adjustable counter weight is available.

Contact will be given either by a wearless proximity switch or by a micro switch.



Schlepplafne
dragging sheet

Technical Data

Fixing	2 holes for M10-screws
Type of enclosure	IP67
Cable inlet	- micro switch: 1 x M20 threaded hole - proximity switch: brought out cable end
Colour	yellow RAL 1003, other colours on request
Weight	16.0 kg, with counter weight 18.0 kg
Operating temperature	-25°C up to +45°C

Selection table

Switch type	Counter weight	Design
MWM1/5		micro switch
MWM1/5-G	X	micro switch
MWN 3/5		proximity switch 20...250 V AC / DC ; 350mA AC / 100mA DC
MWN 3/5-G	X	proximity switch 20...250 V AC / DC ; 350mA AC / 100mA DC